



Care Partner Doctor Discussion Guide

Supporting your loved one on their journey with ATTR-cardiac amyloidosis (ATTR-CM)

Use this guide to better understand their condition and treatment goals, which can inspire more productive conversations with the doctor

Take a few minutes to familiarize yourself with the contents, and talk about the questions with your loved one. Once you've read through and discussed, you can bring it with you to your loved one's next appointment.

Being a care partner can be deeply rewarding but may have its challenges. Make sure you also take time to look out for your own health and well-being.

What is Attruby™ (acoramidis)?

Attruby is a prescription medicine used to treat adults with a disease that affects the heart muscle called cardiomyopathy of wild-type or variant transthyretin-mediated amyloidosis (ATTR-CM), to reduce death and hospitalization related to heart problems.

It is not known if Attruby is safe and effective in children.

IMPORTANT SAFETY INFORMATION

Before taking Attruby, tell your healthcare provider about all your medical conditions, including if you:

- are pregnant or plan to become pregnant
- are breastfeeding or plan to breastfeed

Please see Important Safety Information throughout and accompanying Important Facts Sheet for Attruby. For the Full Prescribing Information and Patient Information for Attruby, visit [Attruby.com/PI](https://www.attruby.com/PI).



Attruby™ and the BridgeBio, Inc. corporate logo are trademarks of BridgeBio, Inc. All other trademarks are property of their respective owners.

© 2025 BridgeBio, Inc. All rights reserved. MAT-US-ACO-0592 V1

Questions to consider:

- 1 What can we expect as ATTR-cardiac amyloidosis (ATTR-CM) progresses?
- 2 What treatment can help us see an impact on ATTR-CM?
- 3 What treatment can help keep them out of the hospital due to heart issues?
- 4 Could the TTR stabilizer Attruby be an option for them?
- 5 How do you measure if Attruby is working?
- 6 Can you tell us more about the support programs available with Attruby that may help us?
- 7 Are there lifestyle changes or dietary adjustments they can make alongside treatment, to help impact their quality of life?
- 8 Are there any resources you could share that I can turn to for support as a caregiver?

IMPORTANT SAFETY INFORMATION (cont'd)

Tell your healthcare provider about all the medicines you take, including prescription and over-the-counter medicines, vitamins, and herbal supplements.

Please see Important Safety Information throughout and accompanying Important Facts Sheet for Attruby. For the Full Prescribing Information and Patient Information for Attruby, visit Attruby.com/PI.



Attruby™ and the BridgeBio, Inc. corporate logo are trademarks of BridgeBio, Inc. All other trademarks are property of their respective owners.

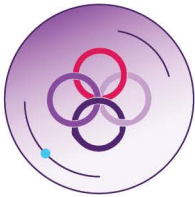
© 2025 BridgeBio, Inc. All rights reserved. MAT-US-ACO-0592 V1



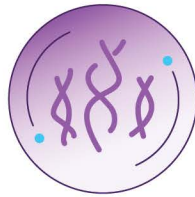
About ATTR-cardiac amyloidosis (ATTR-CM)

Important things to remember

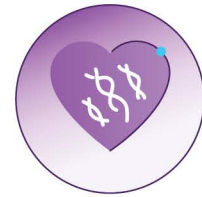
ATTR-CM is caused when a protein called transthyretin (TTR) becomes unstable



Stable TTR is an important protein that helps transport hormones and vitamin A in the body



When TTR becomes unstable, it breaks down into abnormal proteins called amyloid fibrils



These amyloid fibrils build up in the heart, preventing it from working properly, and may eventually lead to heart failure

There are 2 forms of ATTR-CM:

1

Wild-type, caused by natural aging

2

Hereditary, when the condition is passed down through the family

IMPORTANT SAFETY INFORMATION (cont'd)

What are the possible side effects of Attriby?

The most common side effects of Attriby were mild and include:

- diarrhea
- stomach area (abdominal) pain

These are not all of the possible side effects of Attriby.

Call your doctor for medical advice about side effects. You may report side effects to FDA at 1-800-FDA-1088 or <http://www.fda.gov/medwatch>.

Please see Important Safety Information throughout and accompanying Important Facts Sheet for Attriby. For the Full Prescribing Information and Patient Information for Attriby, visit Attriby.com/PI.



Attriby™ and the BridgeBio, Inc. corporate logo are trademarks of BridgeBio, Inc. All other trademarks are property of their respective owners.

© 2025 BridgeBio, Inc. All rights reserved. MAT-US-ACO-0592 V1



How can Attruby help?

Attruby is a TTR stabilizer. It works by stabilizing the bonds that hold a TTR protein together, which helps prevent it from breaking down and forming the amyloid fibrils that cause trouble.



of TTR proteins were stabilized

with Attruby as seen in laboratory tests.

Attruby delivered rapid and sustained results for people with wild-type and hereditary ATTR-cardiac amyloidosis (ATTR-CM).

In a 30-month study, people treated with Attruby did significantly better than those not taking Attruby (placebo). Results were based on a combined measure of survival and hospitalizations due to heart issues.

When comparing results in people treated with and without Attruby at 30 months, people taking Attruby achieved:

81%

SURVIVAL RATE:
— vs —
74% without
Attruby

50%

reduction in
the number of
hospitalizations
due to
heart issues

(0.3 vs 0.6 visits per year)



**A BETTER
HEALTH-RELATED
QUALITY OF LIFE****

3
months

Impact on survival and hospitalizations due to heart issues were observed as early as 3 months.*

*The treatment effect of Attruby on health status was assessed using the Kansas City Cardiomyopathy Questionnaire-Overall Summary score composed of the Physical Limitation, Symptom, Social Limitation, Quality of Life, and Self-Efficacy domains, respectively.

†At the end of the 30-month study of adults with ATTR-cardiac amyloidosis, on average, people experienced a decline in their KCCQ-OS, a measure of quality of life.

IMPORTANT SAFETY INFORMATION (cont'd)

Before taking Attruby, tell your healthcare provider about all your medical conditions, including if you:

- are pregnant or plan to become pregnant
- are breastfeeding or plan to breastfeed

Please see Important Safety Information throughout and accompanying Important Facts Sheet for Attruby. For the Full Prescribing Information and Patient Information for Attruby, visit [Attruby.com/PI](https://attruby.com/PI).



Attruby™ and the BridgeBio, Inc. corporate logo are trademarks of BridgeBio, Inc. All other trademarks are property of their respective owners.

© 2025 BridgeBio, Inc. All rights reserved. MAT-US-ACO-0592 V1





IMPORTANT FACTS

Attruby™ (ah-troo-be)
(acoramidis)
tablets

This is only a brief summary of important information about Attruby and does not replace talking to your doctor about your condition and your treatment.

What is Attruby?

Attruby is a prescription medicine used to treat adults with a disease that affects the heart muscle called cardiomyopathy of wild-type or variant transthyretin-mediated amyloidosis (ATTR-CM), to reduce death and hospitalization related to heart problems.

It is not known if Attruby is safe and effective in children.

Before taking Attruby, tell your healthcare provider about all your medical conditions, including if you:

- are pregnant or plan to become pregnant. It is not known if Attruby will harm your unborn baby. Tell your healthcare provider right away if you become pregnant or think you may be pregnant during treatment with Attruby. You may also report your pregnancy by calling the BridgeBio reporting line at 1-844-550-2246.
- are breastfeeding or plan to breastfeed. It is not known if Attruby passes into your breast milk. Talk to your healthcare provider about the best way to feed your baby during treatment with Attruby.

Tell your healthcare provider about all the medicines you take, including prescription and over-the-counter medicines, vitamins, and herbal supplements.

How should I take Attruby?

- Take Attruby exactly as your healthcare provider tells you to.
- Take Attruby tablets by mouth 2 times a day, with or without food.
- Swallow tablets whole. Do not cut, crush, or chew tablets.

What are the possible side effects of Attruby?

The most common side effects of Attruby were mild and include:

- stomach-area (abdominal) pain
- diarrhea

These are not all of the possible side effects of Attruby.

Call your doctor for medical advice about side effects. You may report side effects to FDA at 1-800-FDA-1088.

How should I store Attruby?

- Store Attruby tablets at room temperature between 68°F to 77°F (20°C to 25°C).
- Store in original blister card until use to protect from moisture.

Keep Attruby and all medicines out of the reach of children.

General information about the safe and effective use of Attruby.

Medicines are sometimes prescribed for purposes other than those listed in a Patient Information leaflet. Do not use Attruby for a condition for which it was not prescribed. Do not give Attruby to other people, even if they have the same symptoms you have. It may harm them. You can ask your pharmacist or healthcare provider for information about Attruby that is written for health professionals.

What are the ingredients in Attruby?

Active ingredient: acoramidis

Inactive ingredients: croscarmellose sodium, magnesium stearate, microcrystalline cellulose, and silicon dioxide. The film coating and printing ink contain black iron oxide, glyceryl monocaprylocaprate, hypromellose, polyvinyl alcohol, propylene glycol, talc, titanium dioxide, and vinyl alcohol graft copolymer.

For more information

This is only a brief summary of important information about Attruby. Talk to your healthcare provider or pharmacist to learn more. **For more information about Attruby, go to [Attruby.com](https://www.attruby.com) or call 1-844-550-2246.**

Distributed by:
BridgeBio Pharma, Inc.
Palo Alto, CA 94304



Attruby™ and the BridgeBio, Inc. corporate logo are trademarks of BridgeBio, Inc. All other trademarks are property of their respective owners.

© 2025 BridgeBio, Inc. All rights reserved. MAT-US-ACO-0068 V1